

Foothill College Institutional Metrics

Student Achievement Data: Institutional Set Standards

April 5, 2021

Academic Senate

E.Kuo
FH IRP



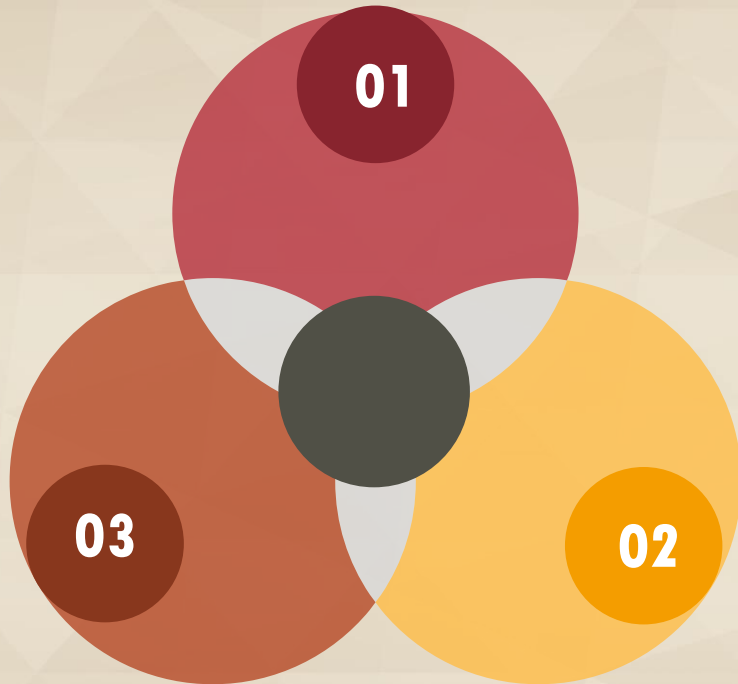
Agenda

- Metrics as component of local goal setting and accreditation
- Define institutional metrics
 - Emphasis today on institutional set standards
- Process of regular review
- Monitor progress

What are institutional metrics?

- Key performance metrics
- Related to the college mission/system goals
- Board approved
- Posted publicly

Where do institutional metrics come from?



01 Institutional-Set Standards (ISS)

Metrics identified by the ACCJC beginning in 2013, our accrediting commission. Reported annually and included in the ACCJC Annual Report. College asked to identify target floor and aspirational goals.

02 Vision for Success (VfS)

Metrics adopted by the Board of Governors in 2017 and is a system-wide initiative. Using baseline data from 2016-17, college to set goals for a five-year timeline through 2021-22. Includes equity-related metrics.

03 Student Equity & Achievement (SEA)

Metrics identified by the CCCCO to align with VfS and integral to the Student Equity Achievement Plan. Using baseline data from 2017-18 for a three-year plan (2018-19 to 2021-22). College identifies disproportionately impacted (DI) groups.

Timeline of Adoption



2013

College sets Institutional Set Standards (target floor) (ACCJC)

All institutional metrics are posted



2021

Accreditation Midterm Report Due



2019

College sets goals for Institutional Set Standards, Vfs/SEA (CCCCO); all locally set goals are board approved

2021 and beyond

Revisit/redefine process for regular review of institutional metrics

Today's Focus

- Emphasis on Institutional Set Standards
 - Midterm Report due October 15, 2021
- Additional metrics not reviewed in-depth here

Institutional-Set Standards

Institutional-Set Standard Overview

- College first identified methodology in 2013; last revisited in Spring 2019
- Reporting includes identification of target floors and aspirational goals
 - Target methodology: 75% of 3-year average
 - Goal methodology: based on VfS 5-year goal, calculated as an annual goal

Institutional-Set Standards: Six Metrics

1. Course Completion

2. Certificates

3. Degrees

3a. Associate Degrees

3b. Bachelor's Degrees

4. Transfer

5. Licensure Exam Pass Rates

6. Employment Rates for CTE Students

Institutional-Set Standards: Six Metric Categories (recap)

Midterm report asks college to reflect on its data (for metrics 1-4)

1. Course Completion

2. Certificates

3. Degrees

3a. Associate Degrees

3b. Bachelor's Degrees

4. Transfer

5. Licensure Exam Pass Rates

6. Employment Rates for CTE Students

Course Success

- Definition: Calculated as the number of student completions with a grade of A, B, C, P divided by the number of students enrolled in the course

Course Success

2017-18	81%
2018-19	81%
2019-20	81%
Target Floor	61%
Aspirational Goal	82%
Goal Progress	FLAT



Certificates

- Definition: Calculated as the number of Certificates of Achievement earned

Certificates

2017-18	819
2018-19	790
2019-20	794
Target Floor	600
Aspirational Goal	860
Goal Progress	UP

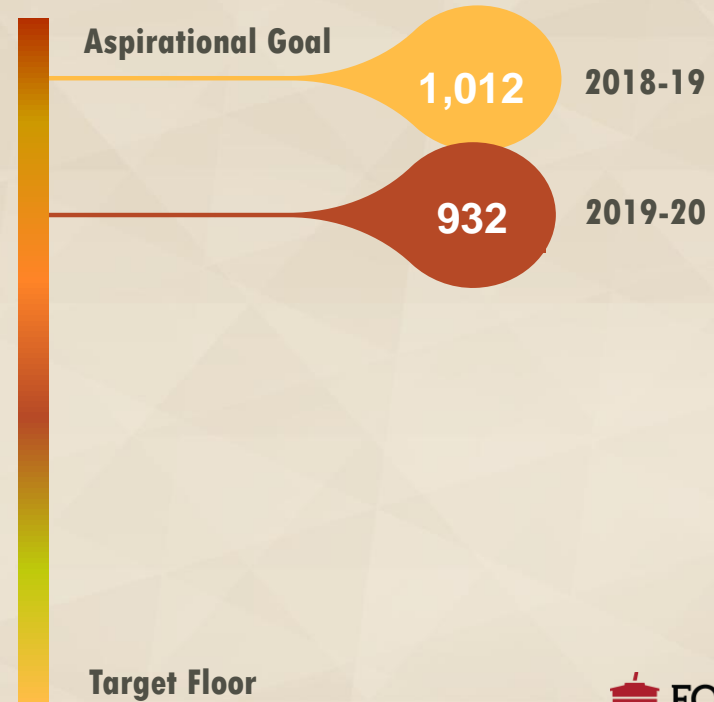


Associate Degrees

- Definition: Calculated as the number of AA, AS, ADT awards

Associate Degrees

2017-18	965
2018-19	1,012
2019-20	932
Target Floor	727
Aspirational Goal	1,018
Goal Progress	DOWN

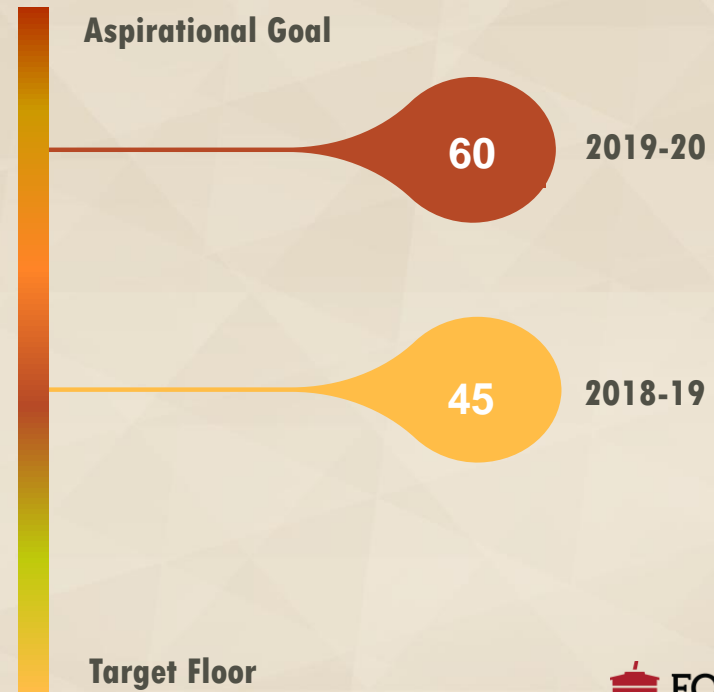


Bachelor's Degrees

- Definition: Calculated as the number of BS awards earned from the Dental Hygiene program

Bachelor Degree

2017-18	23
2018-19	45
2019-20	60
Target Floor	32
Aspirational Goal	75
Goal Progress	UP

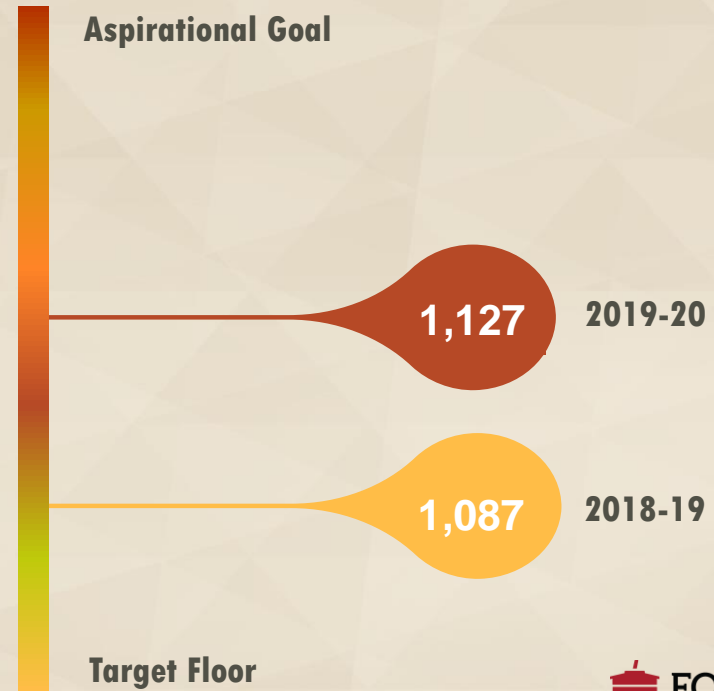


Transfer

- Definition: Calculated as the number transferring to a 4-year institution

Transfer

2017-18	1,255
2018-19	1,087
2019-20	1,127
Target Floor	867
Aspirational Goal	1,383
Goal Progress	UP



Institutional-Set Standards Progress Summary

Metric	Target Floor	Aspirational Goal	2018-19	2019-20	Goal Progress
1. Course Completion	61%	82%	81%	81%	FLAT
2. Certificates	600	860	790	794	UP
3. Degrees					
3a. Associate Degrees	727	1,018	1,012	932	DOWN
3b. Bachelor's Degrees	32	75	45	60	UP
4. Transfer	867	1,383	1,087	1,127	UP
5. Licensure Pass Rates*	54%-75%		64%-100%	75%-100%	
6. Employment Rates for CTE Students*	50%-75%		50%-100%	56%-100%	

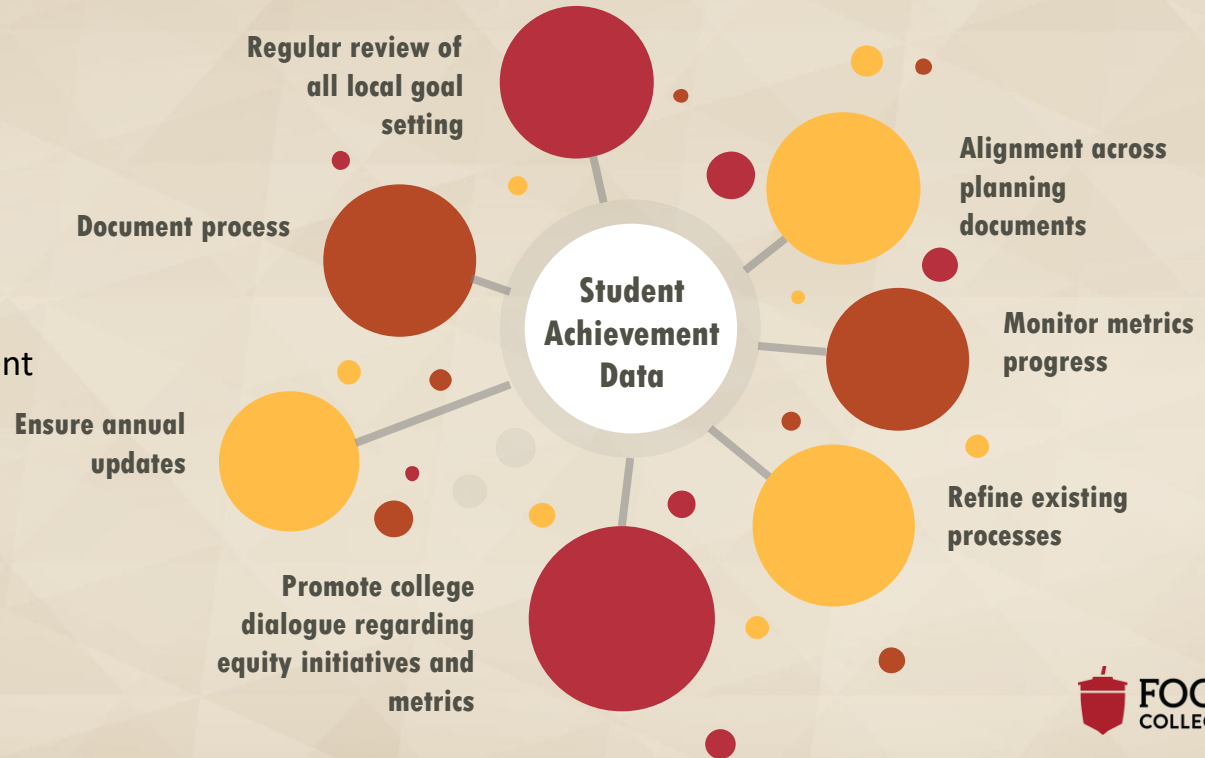
*There are 10 programs requiring state and/or national licensure exams and 17 programs with 10 or more students. ACCJC does not ask for aspirational goals to be identified for these metrics. Targets are not to be identified below 50% based on ACCJC guidance. Note: Calculation of the "Target Floor" is based on 3-yr avg * 75%. | Calculation of "Aspirational Goal" is based on the 5-yr VFS goals calculated as an annual goal (divided by 5); goal is maintained into subsequent years until met. Course Completion goal calculated based on 1-percentage point increase.

Next Steps

For Discussion: Process for Ongoing Review

Institutional Metrics

Institutional Set Standards
Vision for Success
Student Equity and Achievement



Questions?