



Student Equity:
Representation by Ethnicity
Fall 2007 to Fall 2012

PaRC Presentation

April 17, 2013

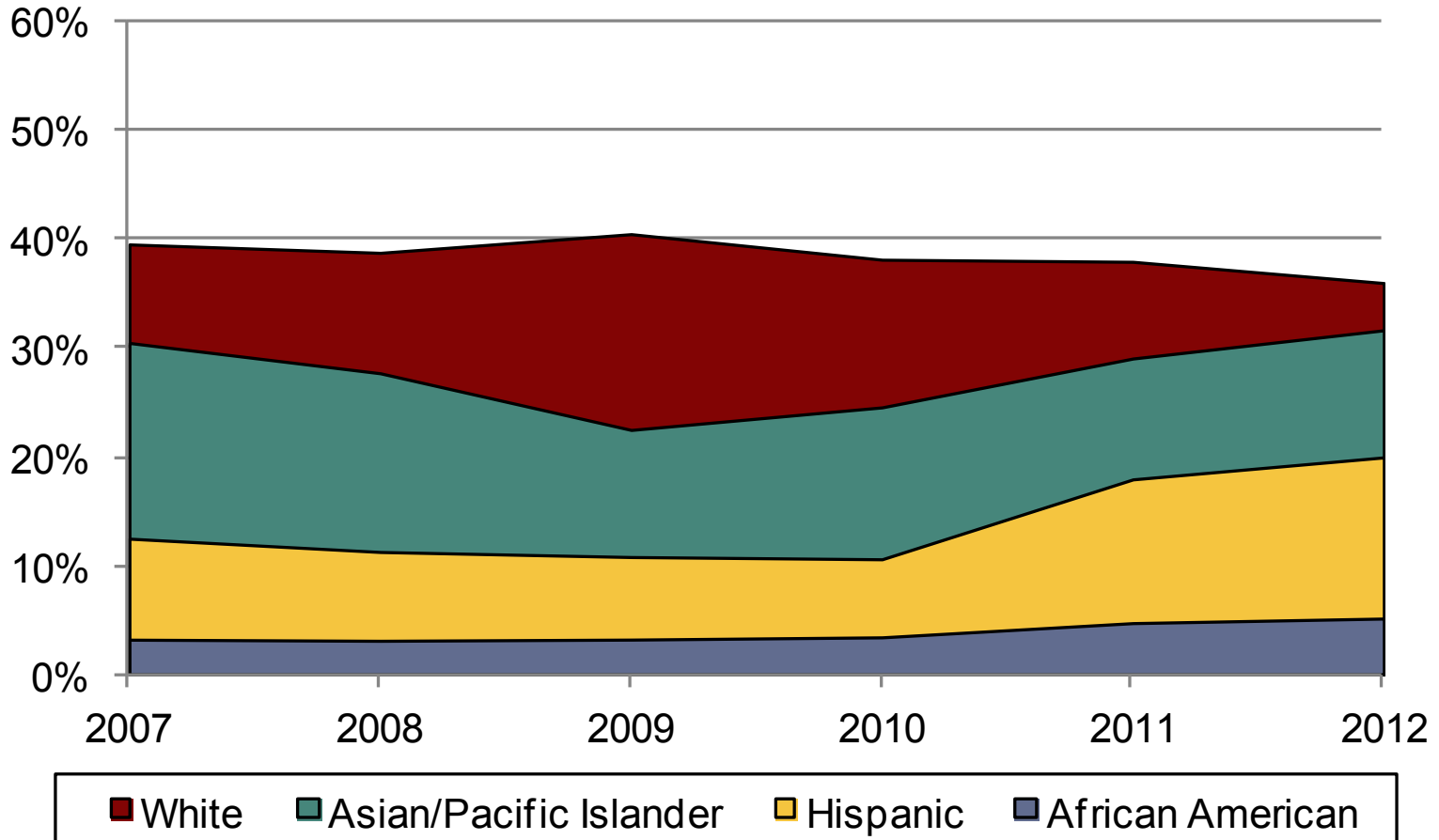
T. Margesson, M. Navi & E. Kuo
FHDA IR&P

Overview

- Breakdown of regional, local population by ethnicity
- Compared with the ethnicities represented in Foothill's student population
- Examine trend lines over 6 years

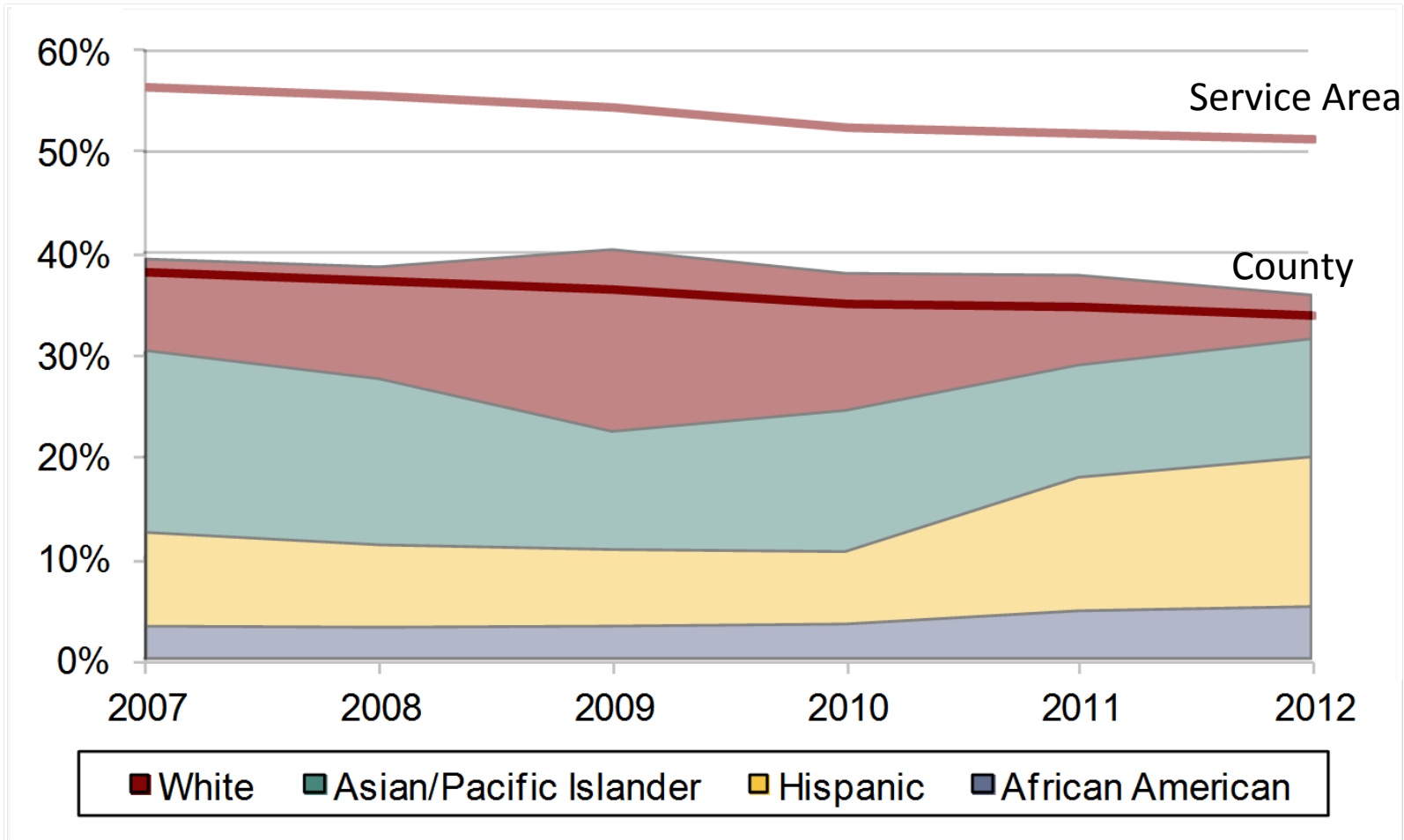
Part I:
Foothill Students and Local Population

Foothill College Fall 2007-Fall 2012 Enrollment by Ethnicity

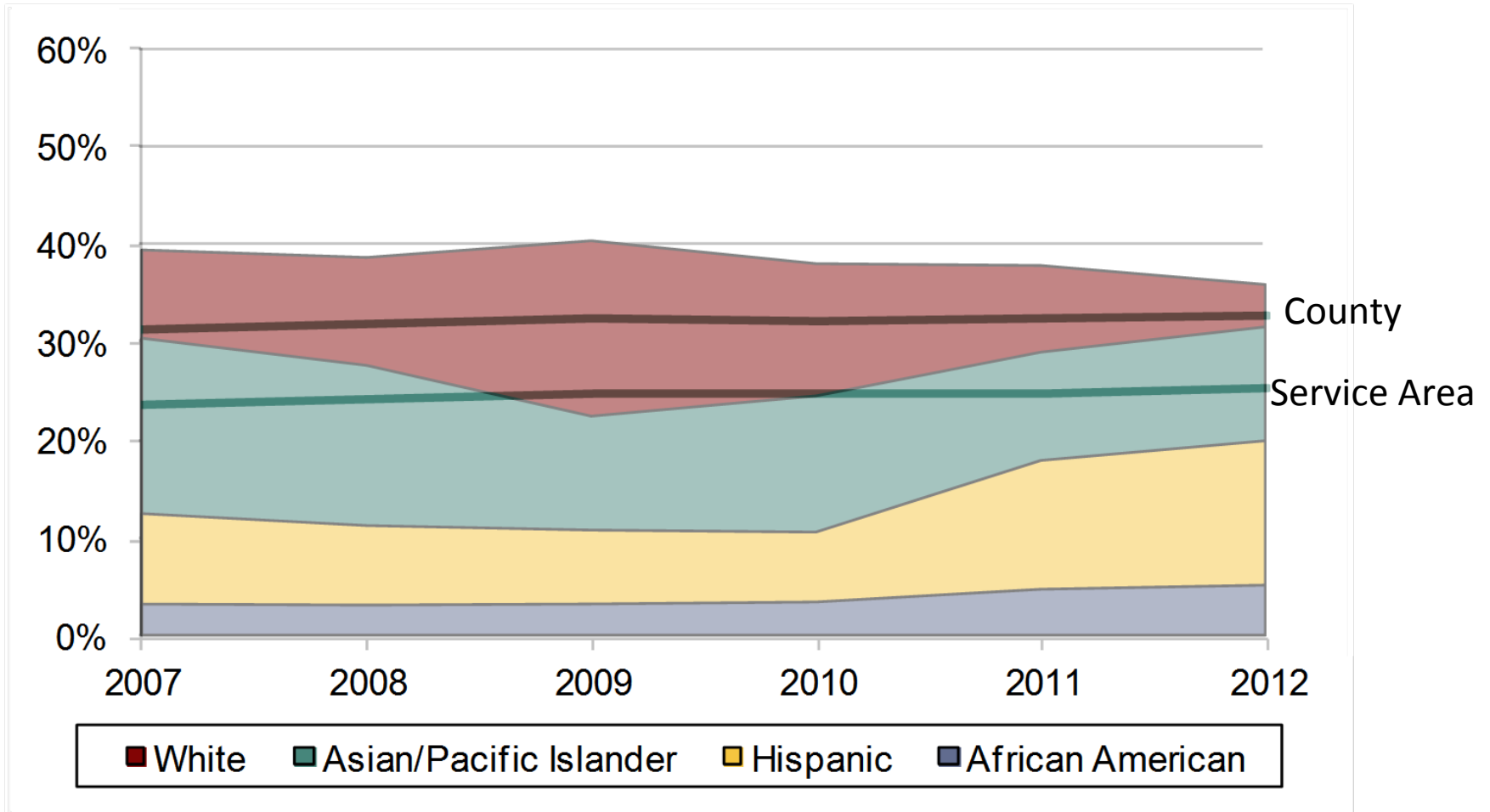


FOOTHILL COLLEGE

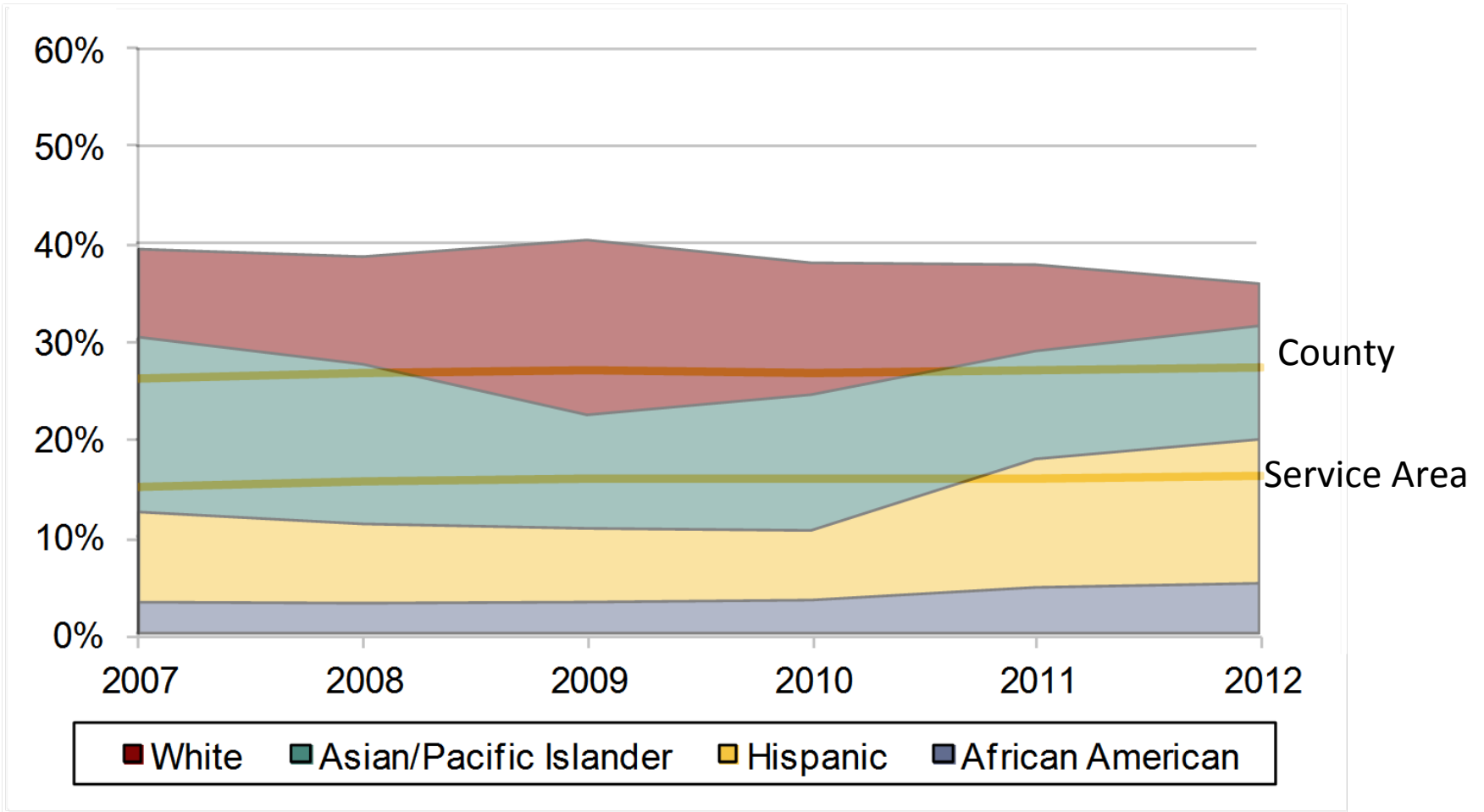
Foothill College Fall 2007-Fall 2012 Student Enrollment and Population County and Service Area Overlay



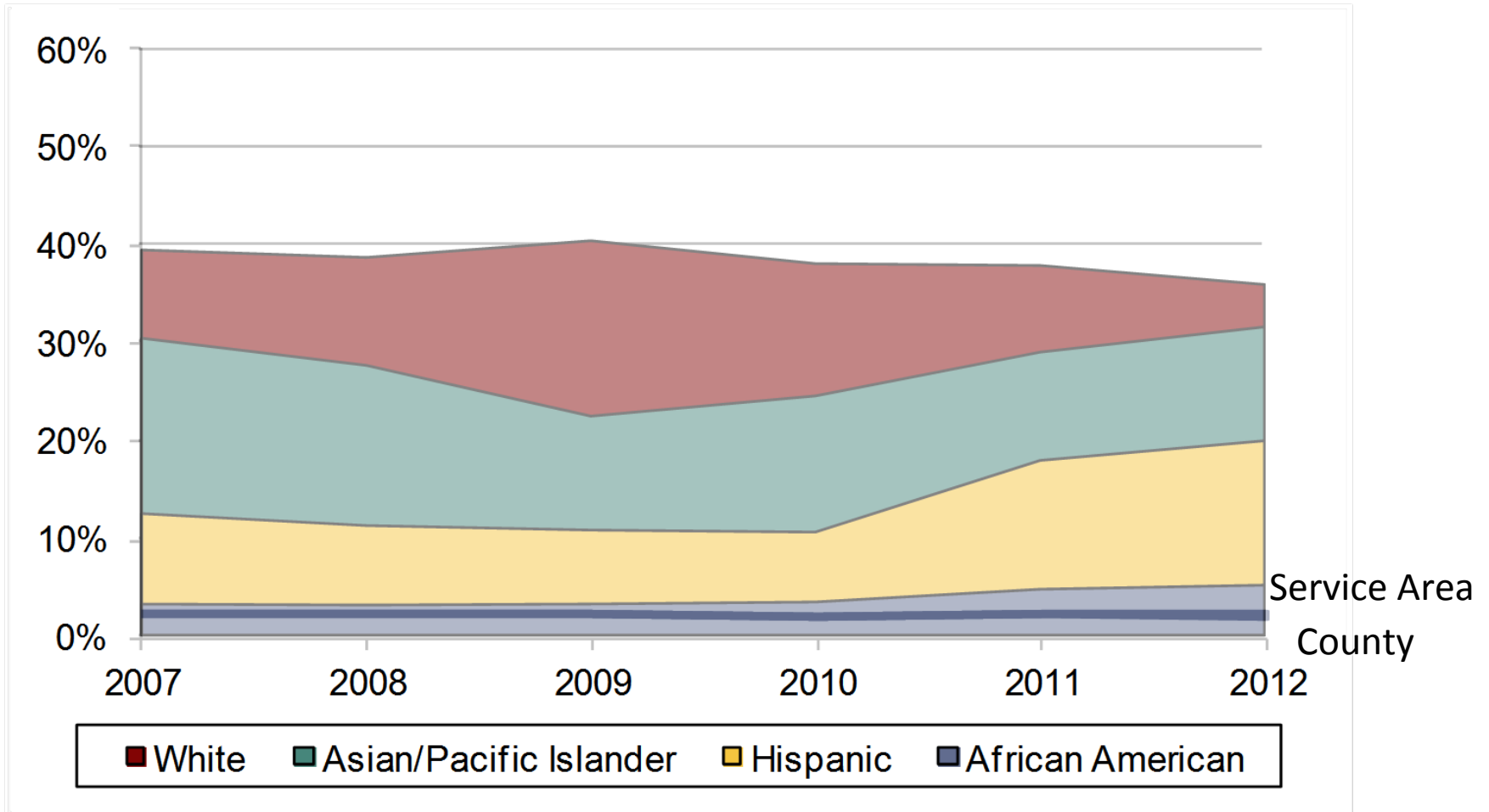
Foothill College Fall 2007-Fall 2012 Student Enrollment and Population County and Service Area Overlay



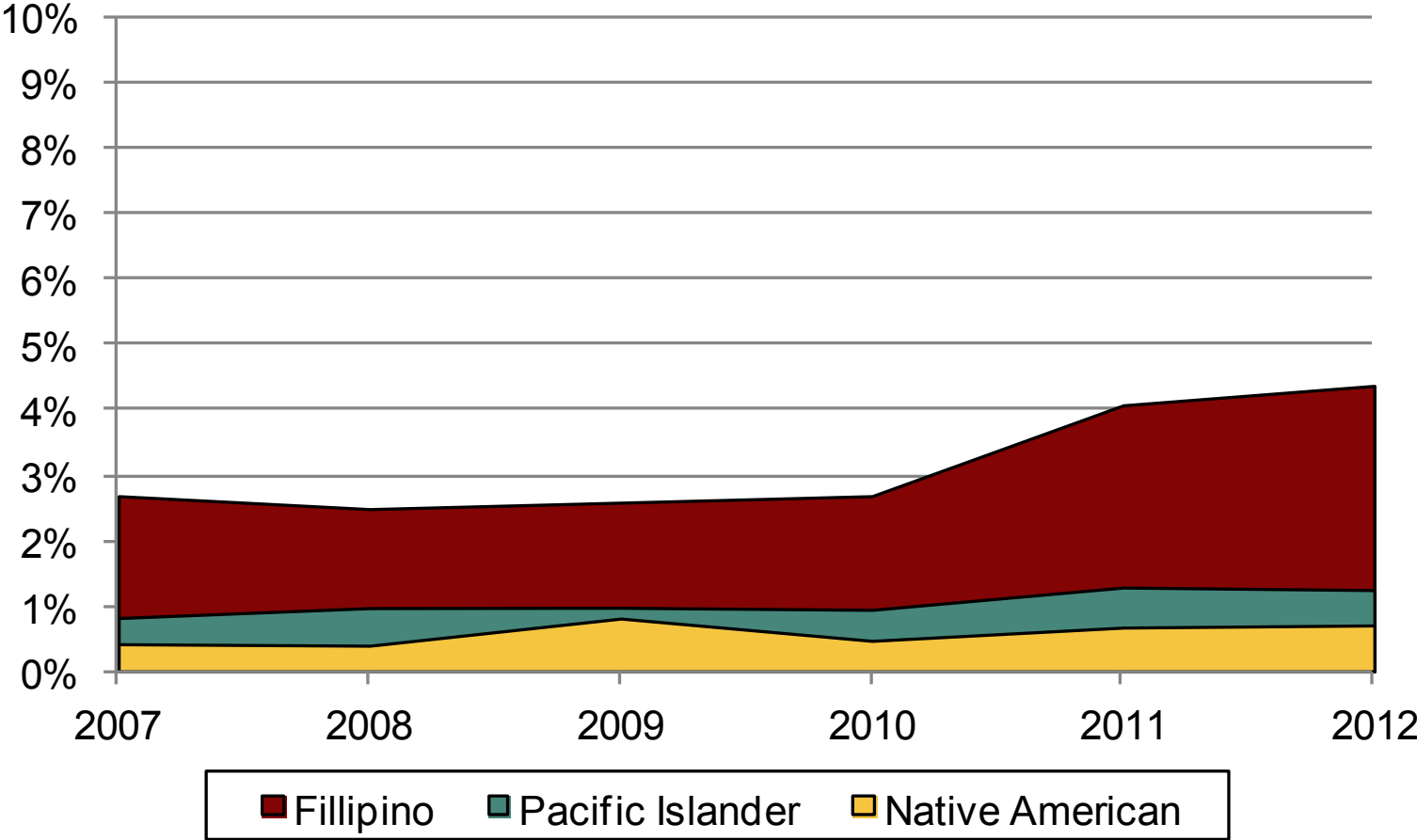
Foothill College Fall 2007-Fall 2012 Student Enrollment and Population County and Service Area Overlay



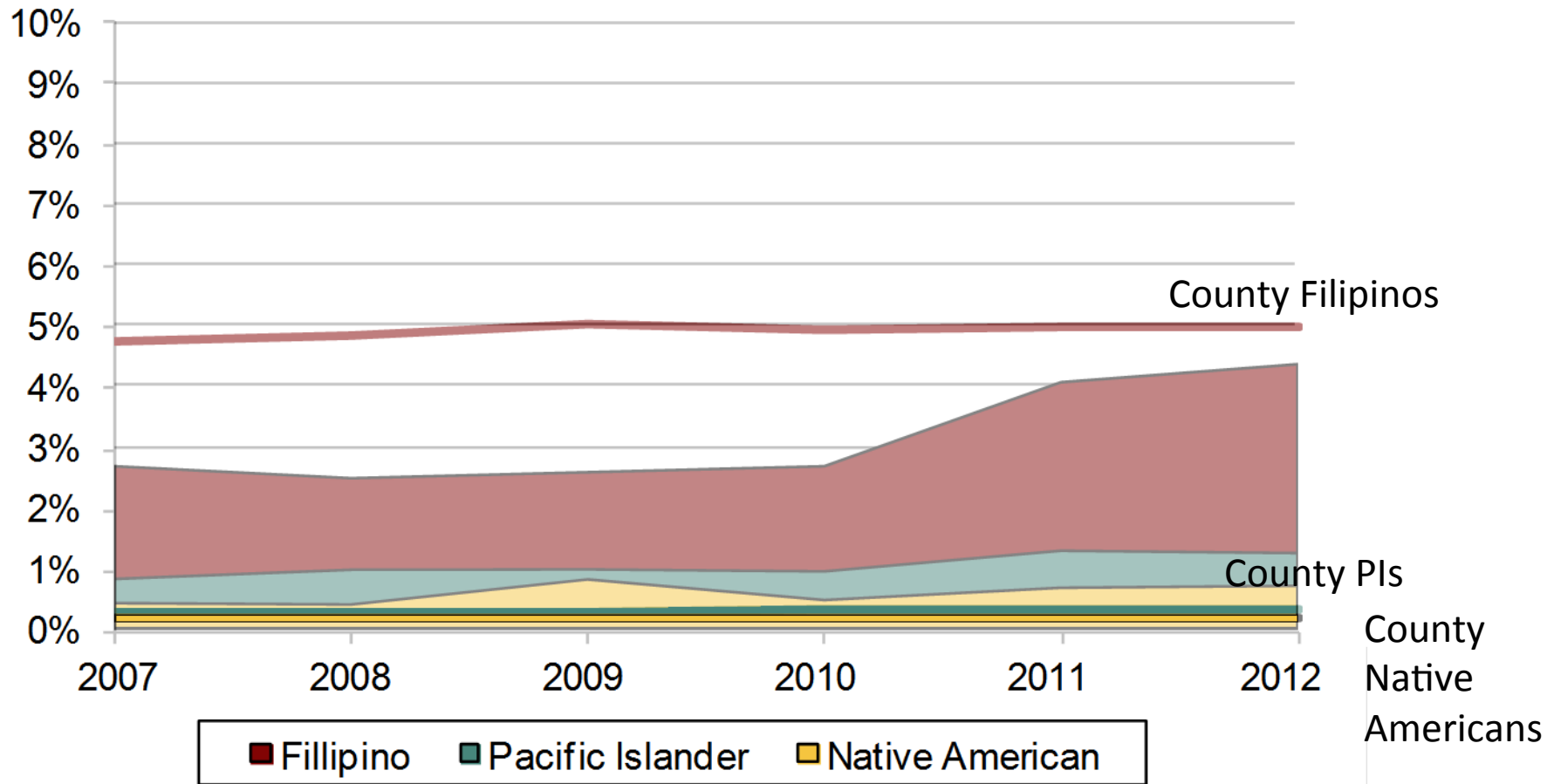
Foothill College Fall 2007-Fall 2012 Student Enrollment and Population County and Service Area Overlay



Foothill College Fall 2007-Fall 2012 Student Enrollment by Ethnicity



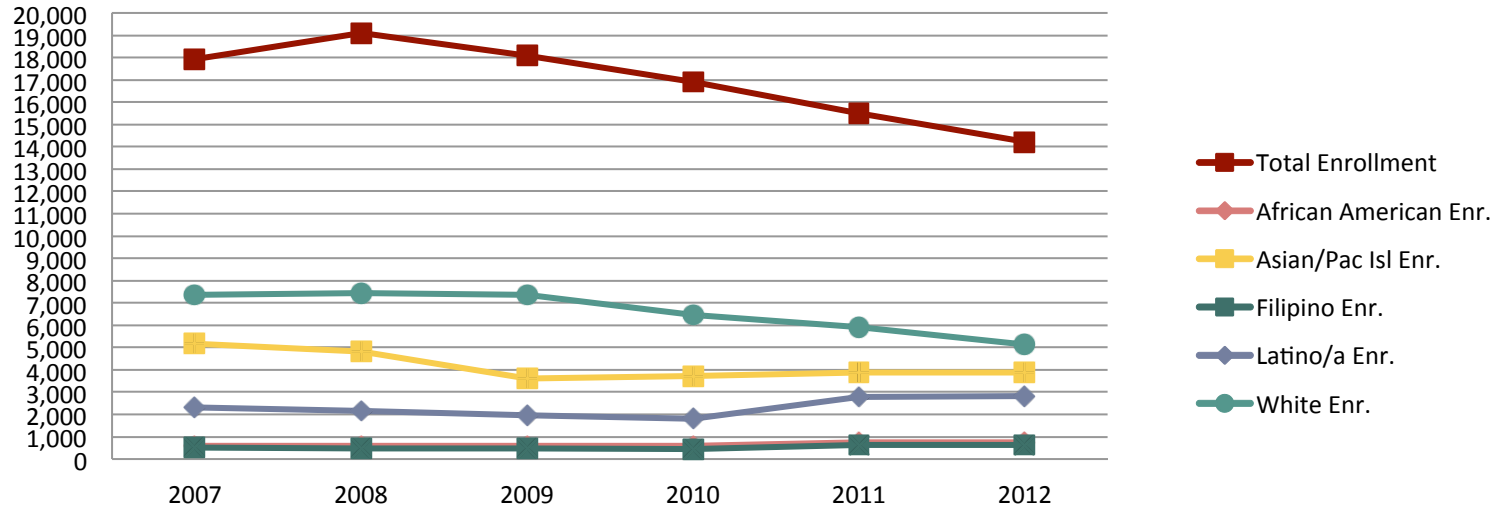
Foothill College Fall 2007-Fall 2012 Student Enrollment and Population County and Service Area Overlay



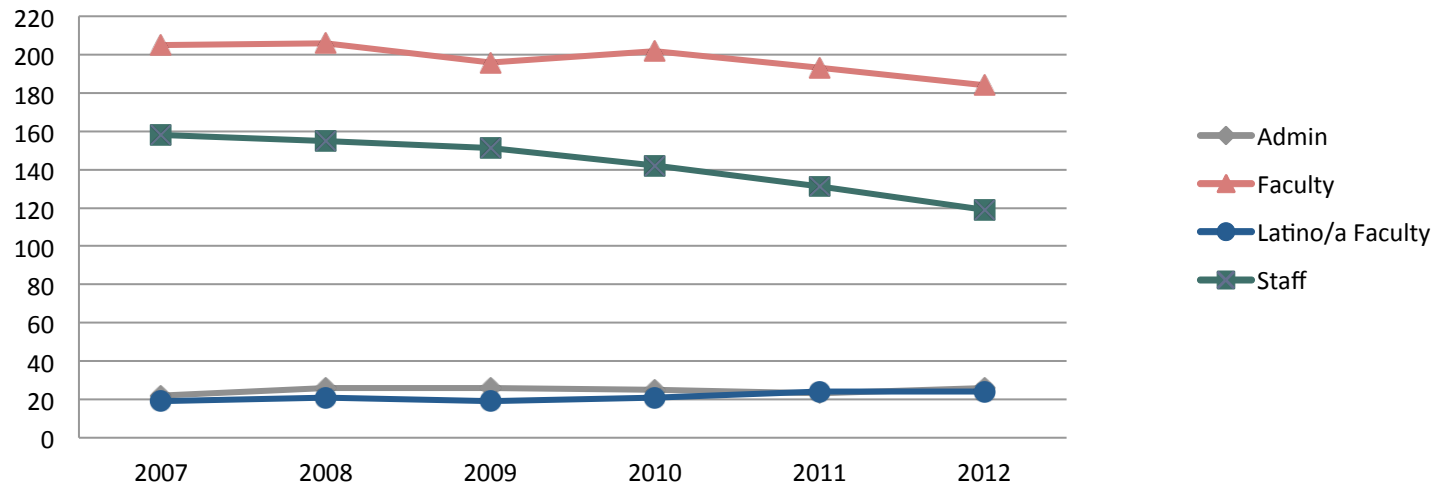
FOOTHILL COLLEGE

Part II:
Foothill Students and Employees

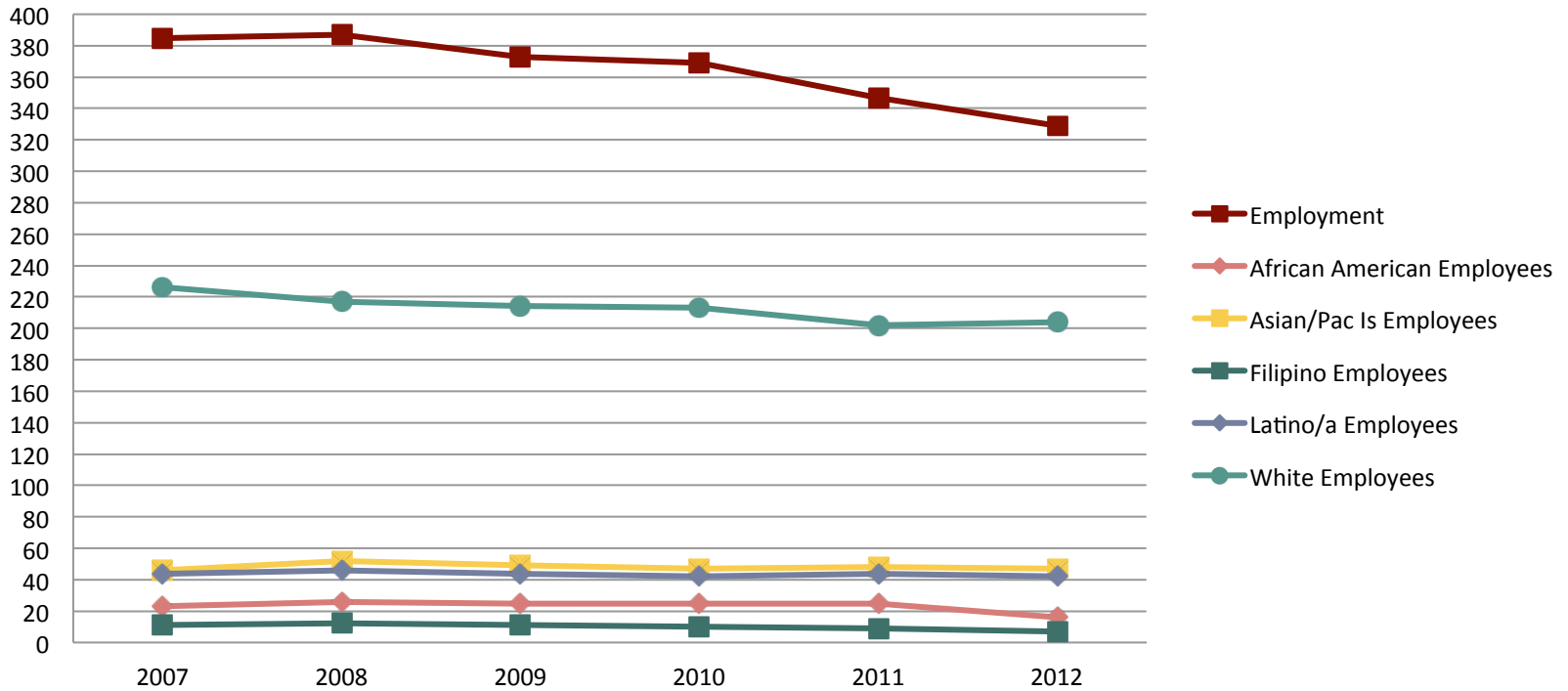
Foothill College Fall 2007-Fall 2012 Enrollment Headcount by Ethnicity



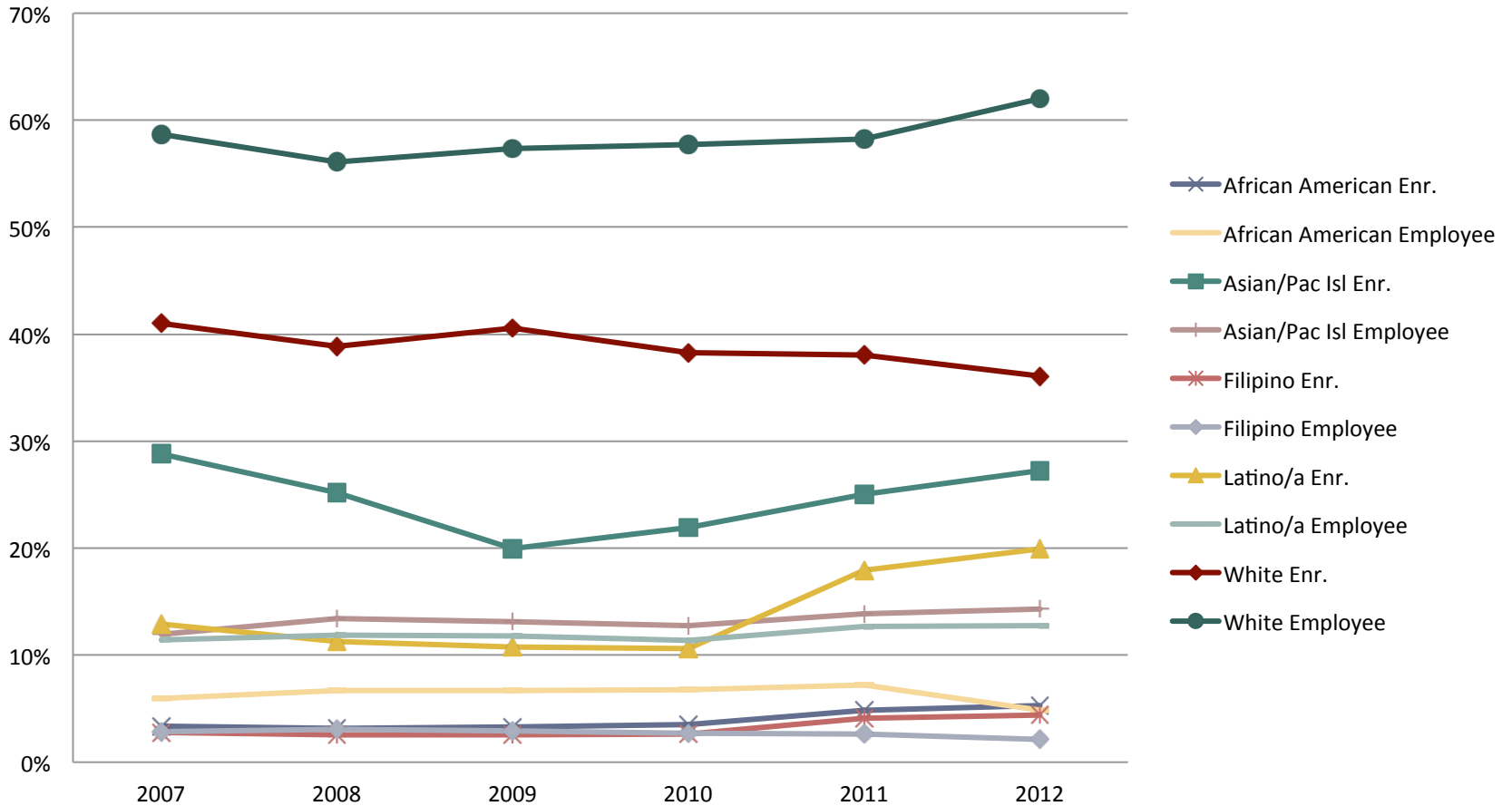
Foothill College Fall 2007-Fall 2012 Employee Headcount by Classification



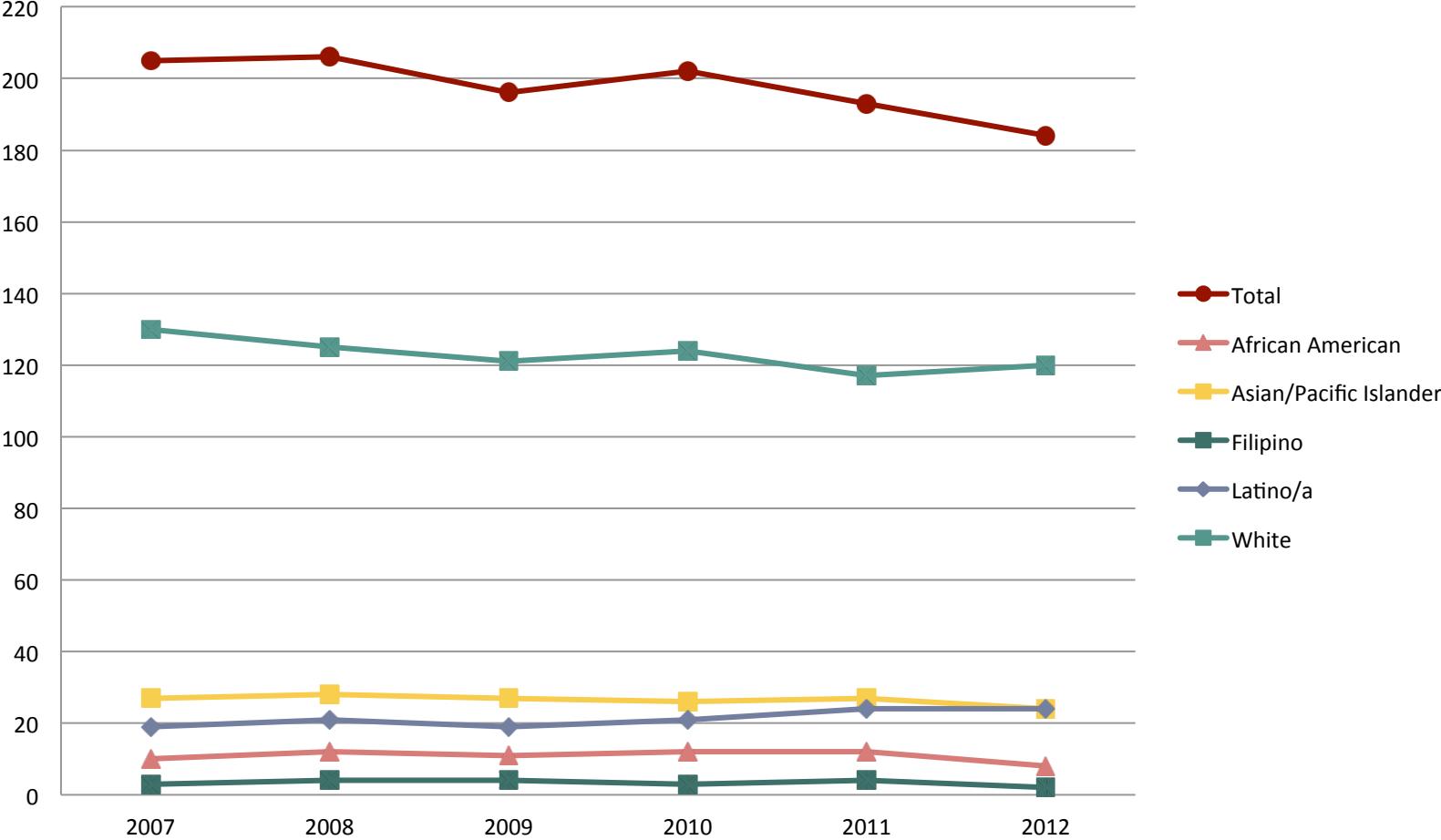
Foothill College Fall 2007- Fall 2012 Employee Headcount by Ethnicity



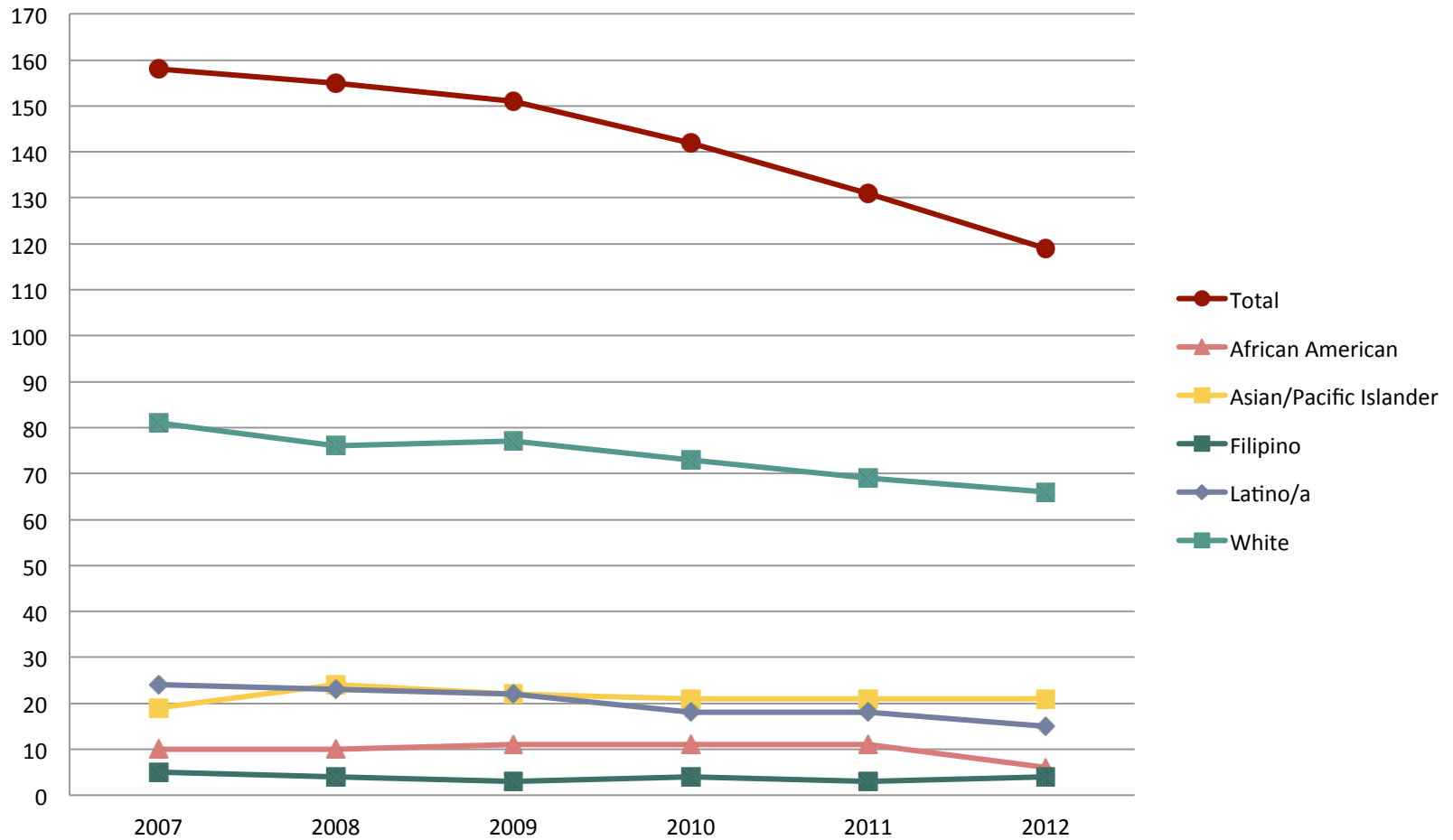
Foothill College Fall 2007-Fall 2012 Enrollment and Employment Percentage by Ethnicity



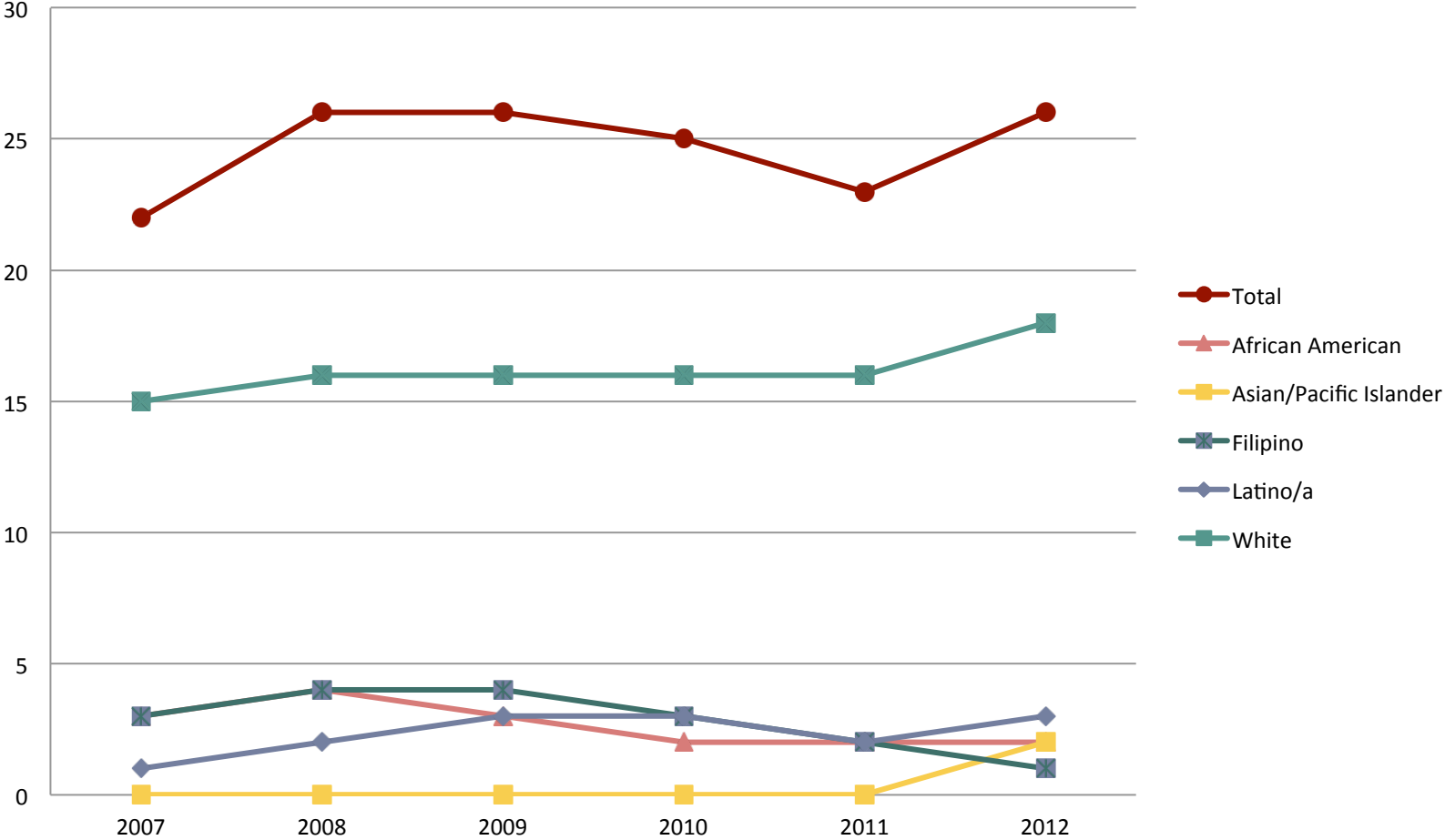
Foothill College Fall Full Time Faculty by Ethnicity



Foothill College Fall Classified Staff by Ethnicity



Foothill College Fall Administrators by Ethnicity



Summary

- Data shows us trend lines and historical patterns
- Must consider how this information informs goals related to student equity
- Ethnicity is just one piece of equity
 - Exploration on other characteristics are needed



Implications

- What's the goal?
- What interventions can be attempted?
- Unpackage issues related to equity
 - Representation: Who is here?
 - Outcomes: What happens to those who are here?